

Station Identity Worksheet

1 Pre-Reading

1. What do you know about the topic?

2. In your own words define _____?

3. Make a personal connection from your own life about _____?

4. Link this topic to a prior class experience in English or Global Perspective.

5. What else do you *want* to know about this topic?

2

Station Work



Quote

Who are you?

Where and when are you?

Who are you speaking to?

What do you want, and how will you get what you want?

Why are you saying what you are saying?

What is going on in your life at this moment?

What was the last thing to happen to you before you start speaking?

What is the impact of your perspective in history?



Quote

Who are you?

Where and when are you?

Who are you speaking to?

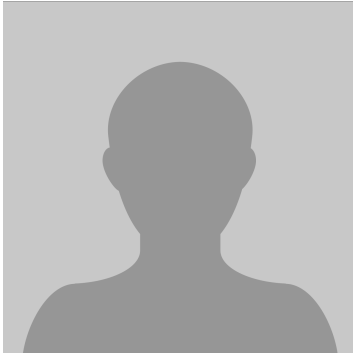
What do you want, and how will you get what you want?

Why are you saying what you are saying?

What is going on in your life at this moment?

What was the last thing to happen to you before you start speaking?

What is the impact of your perspective in history?



Who are you?

Where and when are you?

Who are you speaking to?

What do you want, and how will you get what you want?

Why are you saying what you are saying?

What is going on in your life at this moment?

What was the last thing to happen to you before you start speaking?

What is the impact of your perspective in history?

Quote

How did these stations help develop your own identity, or the identity of another person?

What new ideas are you considering about this topic?

Summarize what you learned.

3 Reflection

What encouraged your understanding/learning of this topic? (Consider tools of learning)

What hindered your learning? What is a possible future solution for this issue?

What questions do you still have? Where could you find an answer to this question?

What resource could you use?

What new questions do you have about this topic?

Link the content from station work to a preview activity/reading.

Possible Roles for students:

- | | | | |
|--|---|------------------------------------|------------------------------------|
| <input type="checkbox"/> Leader | <input type="checkbox"/> Helper | <input type="checkbox"/> Reader | <input type="checkbox"/> Clarifier |
| <input type="checkbox"/> Researcher | <input type="checkbox"/> Task keep-er on-er | <input type="checkbox"/> Recorder | |
| <input type="checkbox"/> AV (audio/visual) | <input type="checkbox"/> Distractor | <input type="checkbox"/> Bystander | <input type="checkbox"/> Resistor |

4 Post Production

How can you use this for your Weebly projects?

-Resources

-Connect 3

-Blog

-Reading Response

-Art and Poetry

-Power to Choose

How?

Notes

Notes

